






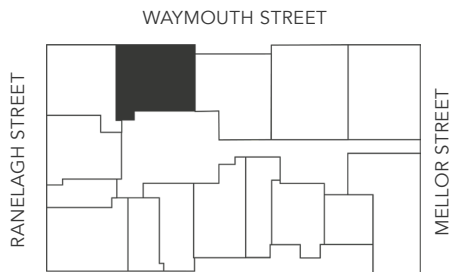
Floor Plans



Apartment Type A

Levels 1 - 12




-  2 Bedrooms 74m² Internal Living
-  2 Bathrooms 6m² External Living
-  1 Car Park 80m² Total Living

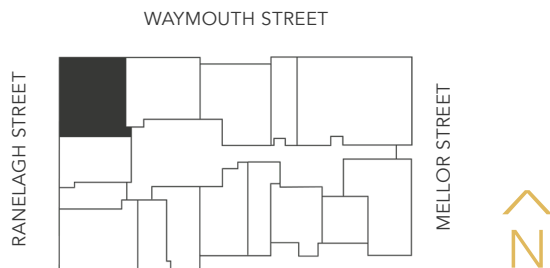
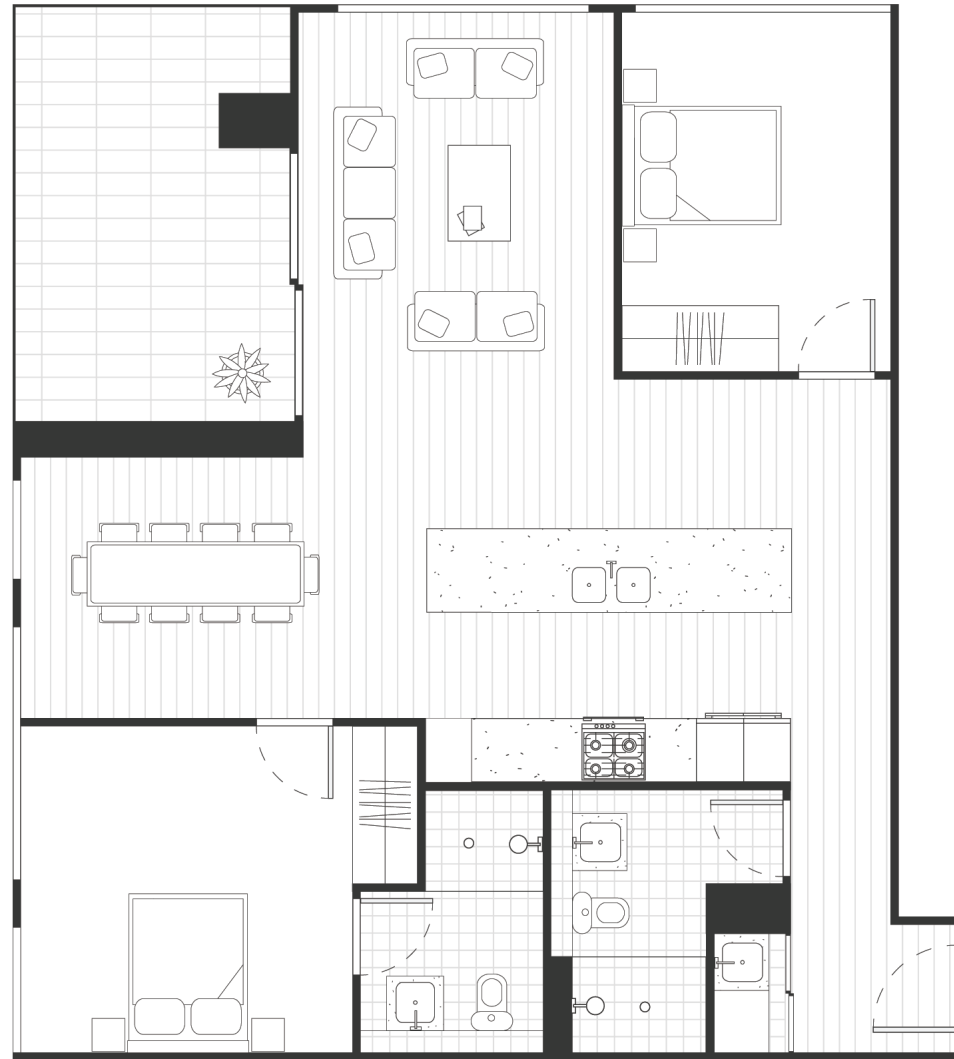


Disclaimer: this drawing is for illustration purposes only. All measurements are approximate and details intended to be relied upon should be independently verified.

Apartment Type B1

Levels 8, 12




-  2 Bedrooms 87m² Internal Living
-  2 Bathrooms 11m² External Living
-  1 Car Park 98m² Total Living

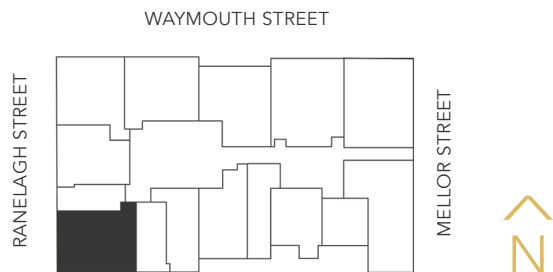
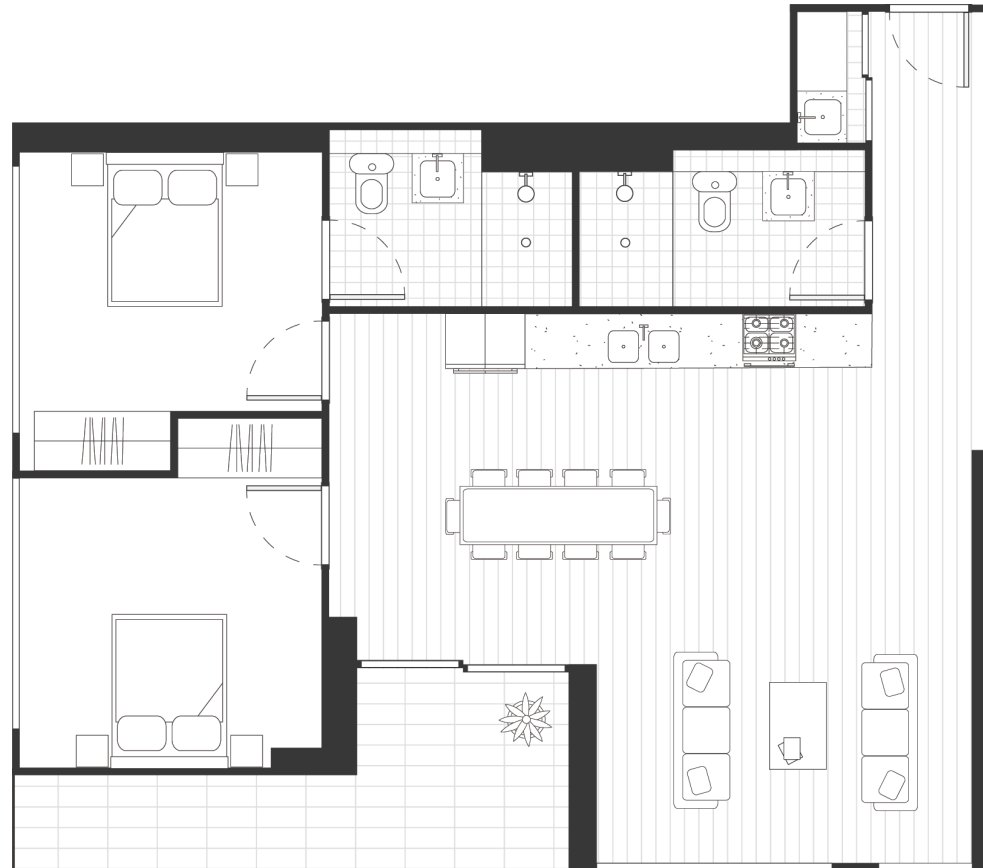


Disclaimer: this drawing is for illustration purposes only. All measurements are approximate and details intended to be relied upon should be independently verified.

Apartment Type D

Levels 1 - 12, 15




-  2 Bedrooms 68m² Internal Living
-  2 Bathrooms 11m² External Living
-  1 Car Park 79m² Total Living

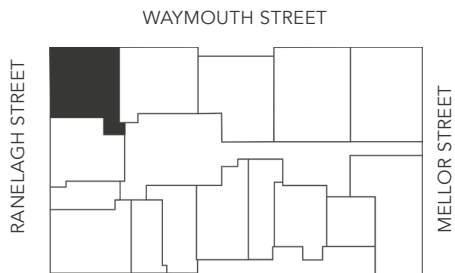
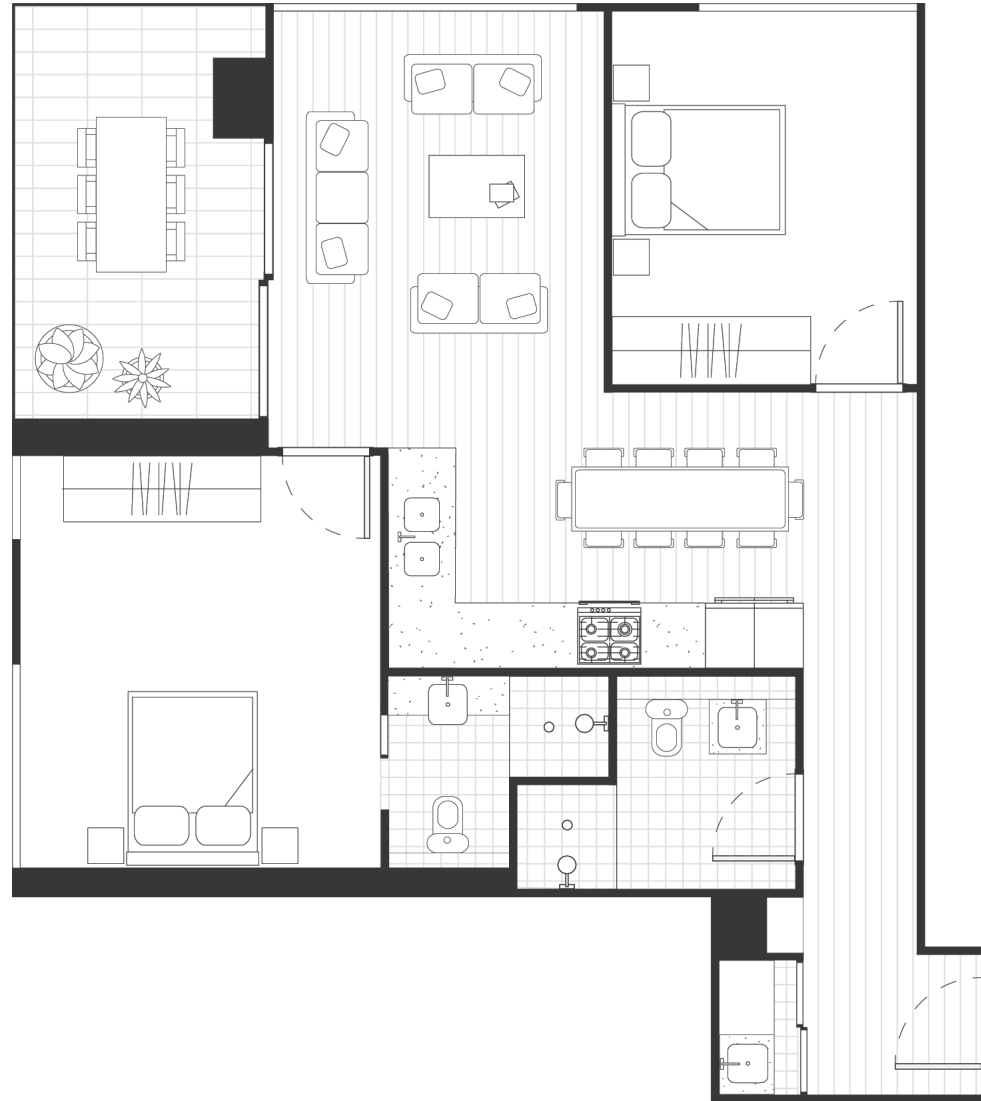


Disclaimer: this drawing is for illustration purposes only. All measurements are approximate and details intended to be relied upon should be independently verified.

Apartment Type H

Levels 1 - 3




-  2 Bedrooms 71m² Internal Living
-  2 Bathrooms 8m² External Living
-  1 Car Park 79m² Total Living

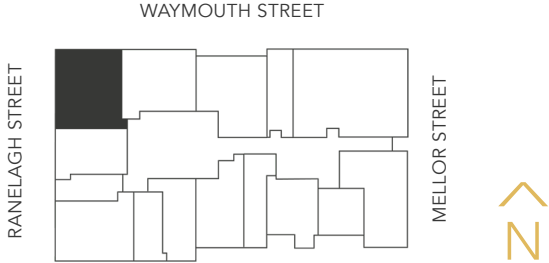
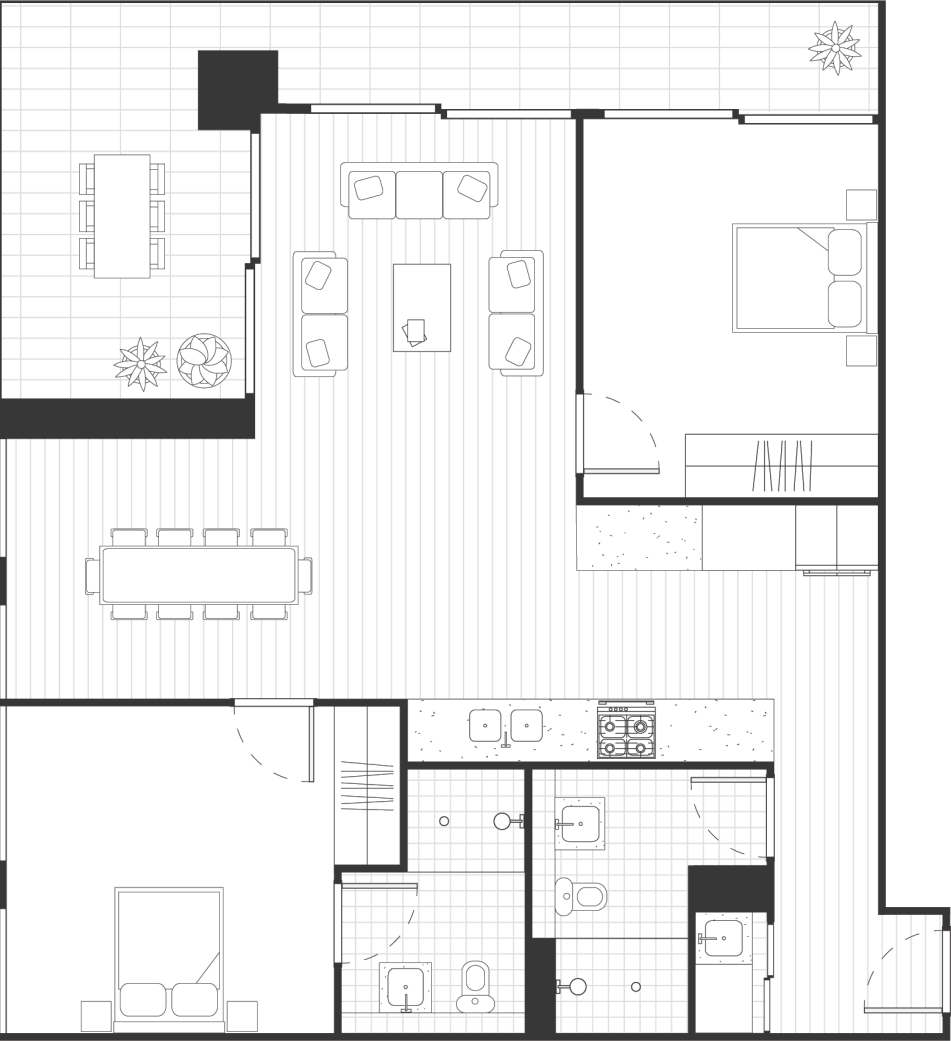


Disclaimer: this drawing is for illustration purposes only. All measurements are approximate and details intended to be relied upon should be independently verified.

Apartment Type L

Level 5

-  2 Bedrooms 76m² Internal Living
-  2 Bathrooms 20m² External Living
-  1 Car Park 96m² Total Living






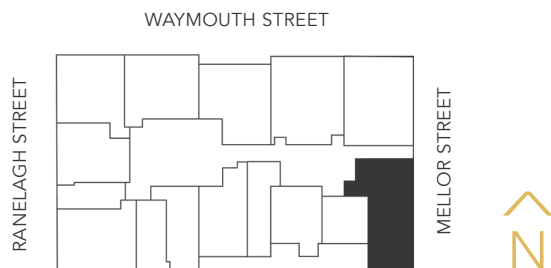
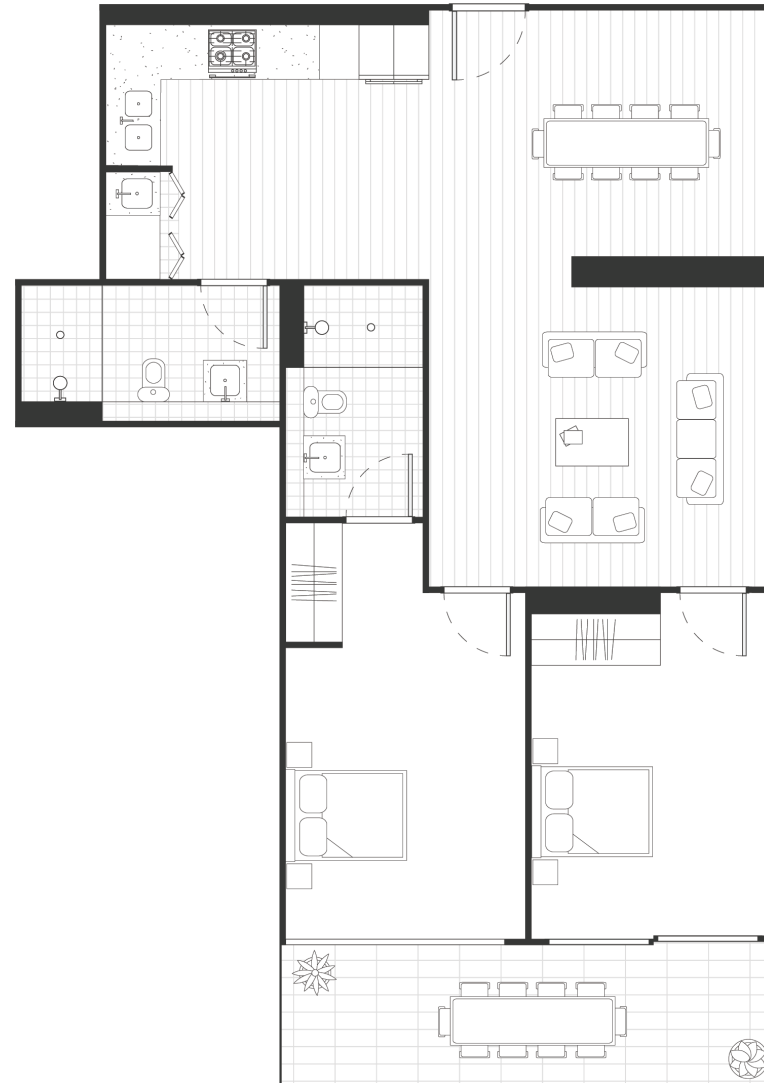
Disclaimer: this drawing is for illustration purposes only. All measurements are approximate and details intended to be relied upon should be independently verified.



Apartment Type P

Levels 1 - 12




-  2 Bedrooms 73m² Internal Living
-  2 Bathrooms 12m² External Living
-  1 Car Park 85m² Total Living

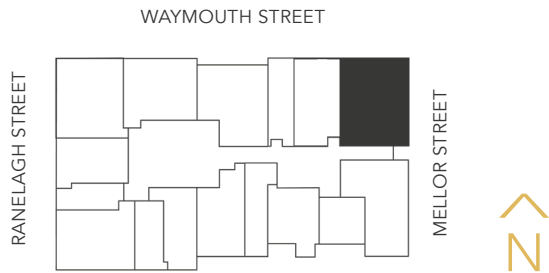
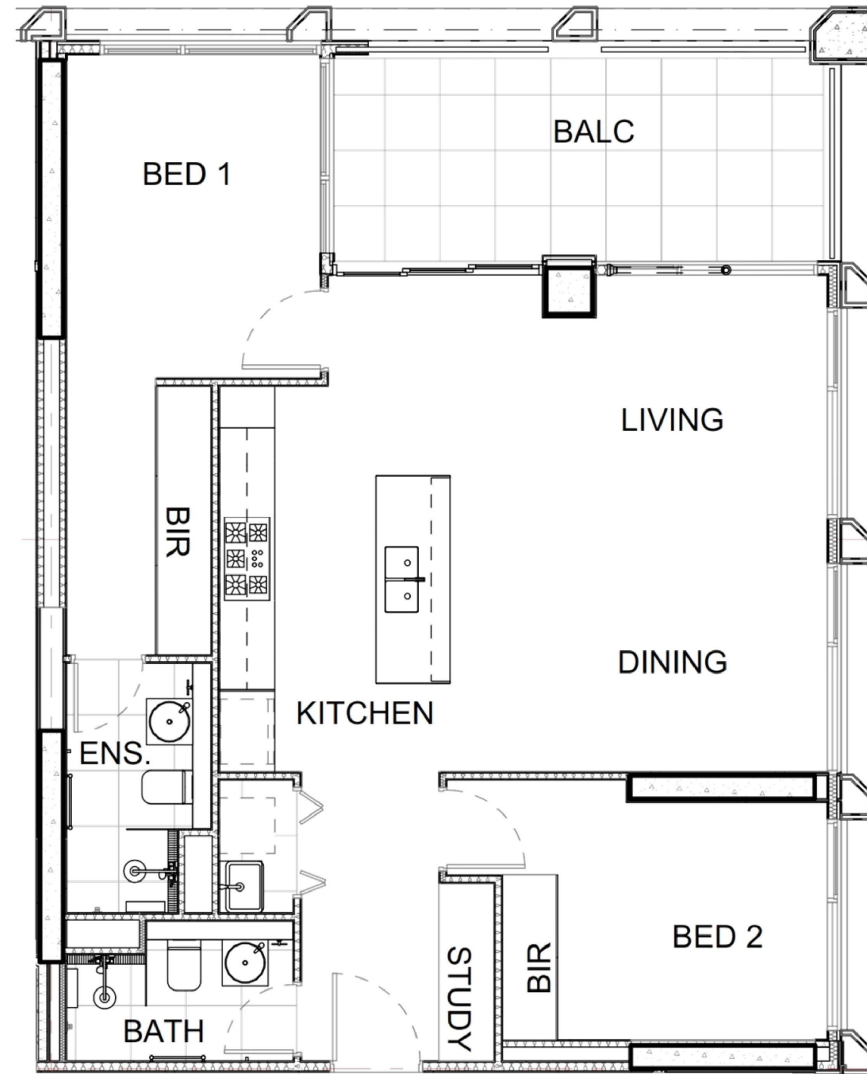


Disclaimer: this drawing is for illustration purposes only. All measurements are approximate and details intended to be relied upon should be independently verified.

Apartment Type Q2

Levels 6




-  2 Bedrooms 90m² Internal Living
-  2 Bathrooms 17m² External Living
-  1 Car Park 107m² Total Living

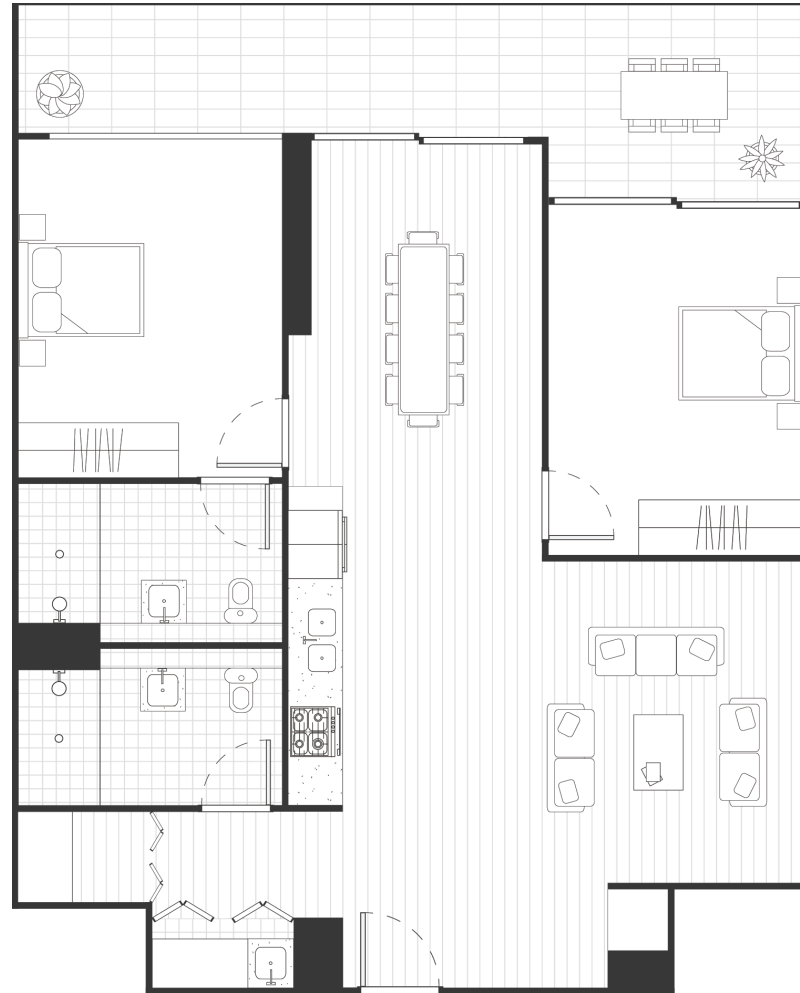
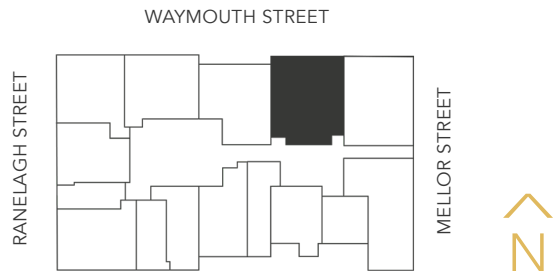


Disclaimer: this drawing is for illustration purposes only. All measurements are approximate and details intended to be relied upon should be independently verified.

Apartment Type S

Level 3, 5

-  2 Bedrooms 76m² Internal Living
-  2 Bathrooms 20m² External Living
-  1 Car Park 96m² Total Living



Disclaimer: this drawing is for illustration purposes only. All measurements are approximate and details intended to be relied upon should be independently verified.

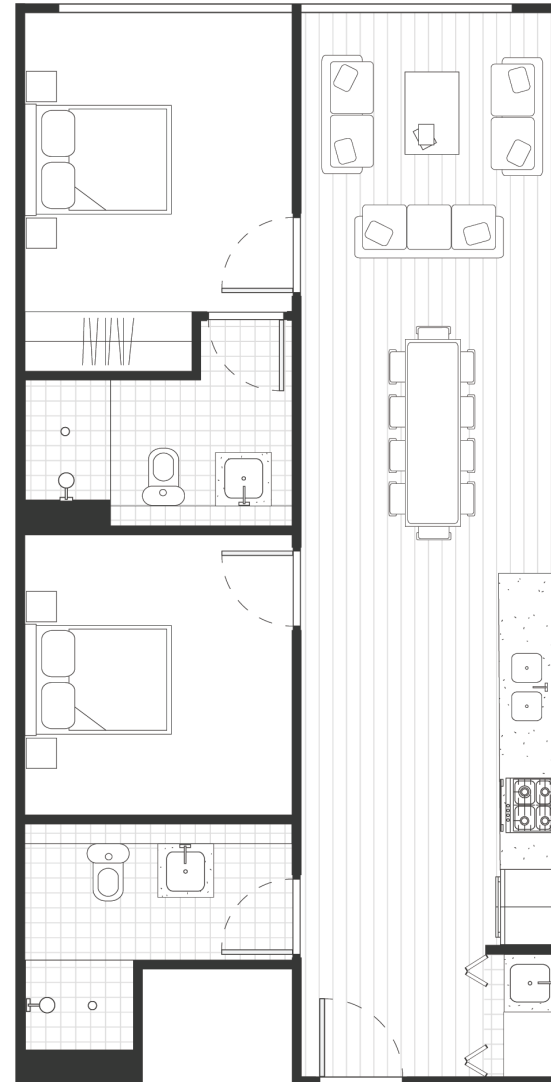
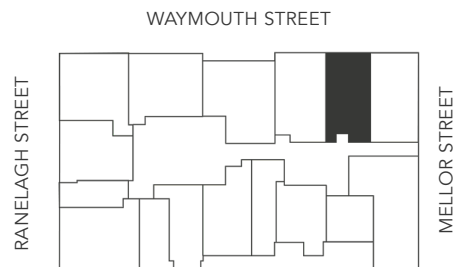
Apartment Type U2

Level 2

 2 Bedrooms 60m² Internal Living

 2 Bathrooms 60m² Total Living

 1 Car Park



Disclaimer: this drawing is for illustration purposes only. All measurements are approximate and details intended to be relied upon should be independently verified.

